

***Ixora* leaf-mining weevil**

Unknown species

Coleoptera: Curculionidae

Aubrey Moore
University of Guam

collaborator
collaborator institution



Fig. 1. Adult weevil.

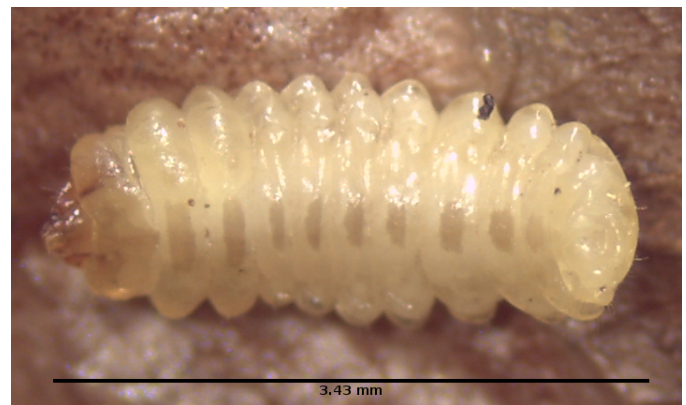


Fig. 2. Weevil grub removed from a leaf mine.

On December 3, 2014, Tedi Mary, Pacific Island Club Resort, Tumon Bay, Guam (13.5038°N, 144.7927°E), submitted leaf samples of *Ixora* with large blotch mines (Fig. 3). This damage was caused by the grubs of an unidentified weevil (Figs. 2 and 1).

DISTRIBUTION

Unknown.

HOST RANGE

Unknown.



Fig. 3. Feeding damage: leaf mine in an *Ixora* leaf.