

Camphor Scale

Pseudaonidia duplex (Cockerell)

(Hemiptera: Sternorrhyncha: Coccoidea: Diaspididae)

Aubrey Moore and James McConnell
University of Guam

Gillian Watson
California Department of
Food and Agriculture

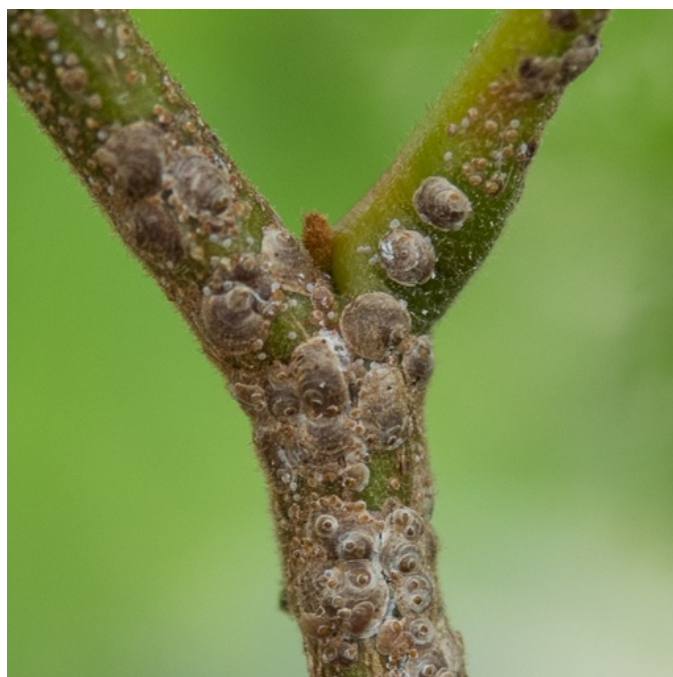


Fig. 1. Camphor scale infesting *Serianthes nelsonii*. (Image by J. McConnell)

This armored scale insect was discovered by James McConnell infesting seedlings of the endangered tree *Serianthes nelsonii* growing in his plant nursery at the University of Guam in Mangilao (13.431137°N, 144.799360°E) in September 2014. Specimens were identified by Gillian Watson, California Department of Food and Agriculture. This is the first record for this insect from Guam and the rest of Micronesia and the first report of it attacking *Serianthes nelsonii* or any other legume (Fabaceae). This scale insect is considered to be one of the principal armored scale pests in the world ([Miller and Davidson, 2005]).

DISTRIBUTION

Probably originating in Asia, this scale insect was reported from Hawaii and California in 1908.

Australasian: Hawaiian Islands (Hawaii). **Nearctic:** United States of America (Alabama, California, Florida, Georgia, Louisiana, Mississippi, Texas, Virginia). **Oriental:** China (Guangdong (=Kwangtung), Guangxi (=Kwangsi), Guizhou (=Kweichow), Hubei (=Hupei), Hunan, Shanghai, Sichuan (=Szechwan), Yunnan, Zhejiang (=Chekiang)); Hong Kong; India (Assam); Indonesia (Java); Sri Lanka; Taiwan. **Palaeartic:** China (Hebei (=Hopei), Henan (=Honan)); Georgia (Abkhaz ASSR, Adzhar ASSR); Iran; Japan (Honshu, Kyushu, Shikoku); South Korea. (Data from ScaleNet [Ben-Dov, 2014]).

HOST RANGE

This scale insect is known to attack more than 200 plant species including the following (Ben-Dov, 2014).

Aceraceae: *Acer palmatum matsumurae*. **Anacardiaceae:** *Mangifera indica*, *Rhus succedanea*. **Aquifoliaceae:** *Ilex* sp. **Betulaceae:** *Alnus hirsuta*. **Ericaceae:** *Rhododendron* sp, *R. arboreum*. **Fagaceae:** *Castanea pubinervis*, *C. cuspidata*, *Quercus* sp, *Q. phillyraeoides*. **Illiciaceae:** *Illicium religiosum*. **Lauraceae:** *Cinnamomum camphor*. **Magnoliaceae:** *Michelia fuscata*. **Moraceae:** *Ficus carica*, *F. kingiana*. **Myricaceae:** *Myrica rubra*. **Oleaceae:** *Ligustrum* sp, *Olea fragrans*, *Osmanthus* sp, *O. fragrans*. **Rosaceae:** *Photinia glabra*, *Pyracantha angustifolia*. **Rutaceae:** *Citrus* sp, *C. junos*, *C. natsudaidai*. **Sapindaceae:** *Nephelium litchi*. **Theaceae:** *Camellia* sp, *C. japonica*, *C. sinensis*, *Eurya japonica*, *E. ochracea*, *Ternstroemia japonica*, *Thea japonica*, *T. sasanqua*, *T. sinensis*.

REFERENCES

- Y. Ben-Dov. Scalenet, *Pseudaonidia duplex*, 2014.
URL <http://www.sel.barc.usda.gov/catalogs/diaspidi/Pseudaonidiaduplex.htm>. [Online; accessed 19-September-2014].
- D.R. Miller and J.A. Davidson. *Armored Scale Insect Pests of Trees and Shrubs (Hemiptera: Diaspididae)*. Reference, Information and Interdisciplinary Subjects Series. Cornell University Press, 2005. ISBN 9780801442797. URL <http://books.google.com/books?id=PhgyeCnpklMC>.