



Hawaii Beetle Dissections

Prepared by
Aubrey Moore
University of Guam Cooperative Extension Service
and
Sean Marshall
AgResearch, New Zealand

January 17, 2014*

Four beetles from Hawaii were sexed, measured and dissected to look for eggs. Sample 1 was an interception in the arrivals baggage area of the Honolulu International Airport. The remaining three specimens were from pheromone trap CRB4 deployed on a golf course at the Hickam Air Force Base. All were female; two were gravid but we did not find embryos.

1 Notes

20140114.001 (interception # APWJI????; International airport on 2013/??/?? baggage carousel)

Female

Body length: 49 mm (L)

Elytra dimensions: 27 x 21 mm (LxW)

*Revised February 12, 2014

C:/Documents and Settings/Administrator/My Documents/CRB Tech Reports/2014-01-17A Hawaii Beetle Dissections/CRB2014-01-17A.lyx

Dissection: many eggs easily observed, no obvious embryo within the 1 egg that was dissected (1, 2, 3).

20140114.002 (interception # APWHI133641003001; trap#CRB4 on 2013/12/30 near airforce base)

Female

Body length: 44mm (L)

Elytra dimensions: 25 x 19 mm (LxW)

Dissection: initial tissue appeared to be undergoing initial putrefaction, no obvious eggs seen (4).

20140114.003 (interception # APWHI140021003001; trap#CRB4 on 2014/01/02 near airforce base)

Female

Body length: 44mm (L)

Elytra dimensions: 27 x 21 mm (LxW)

Dissection: many eggs easily observed, no obvious embryo within the 1 egg that was dissected (5).

20140114.004 (interception # APWHI140021003001; trap#CRB4 on 2014/01/02 near airforce base)

Female

Body length: 42mm (L)

Elytra dimensions: 25 x 19 mm (LxW)

Dissection: initial tissue appeared to be undergoing initial putrefaction, no obvious eggs seen (6).

2 Acknowledgments

Thanks to USDA-APHIS-PPQ for releasing the Hawaii CRB specimens to us.

This work was done by AgResearch New Zealand in collaboration with the University of Guam with financial support from a USDA-APHIS grant.

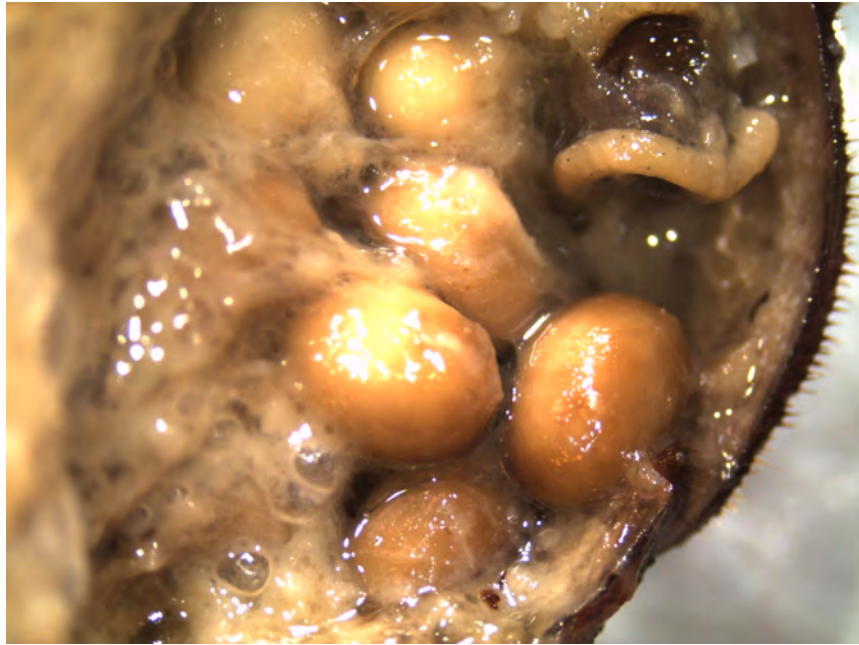


Figure 1: Eggs in beetle 20140114.01

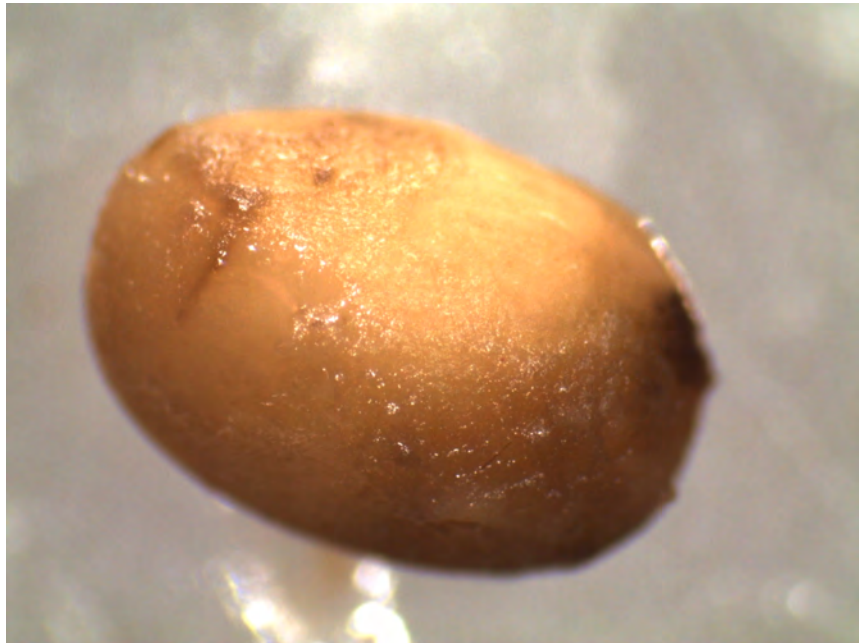


Figure 2: Egg from beetle 20140114.01



Figure 3: No obvious embryo in egg from beetle 20140114.01



Figure 4: Beetle 200140114.02.



Figure 5: Eggs in beetle 200140114.03.

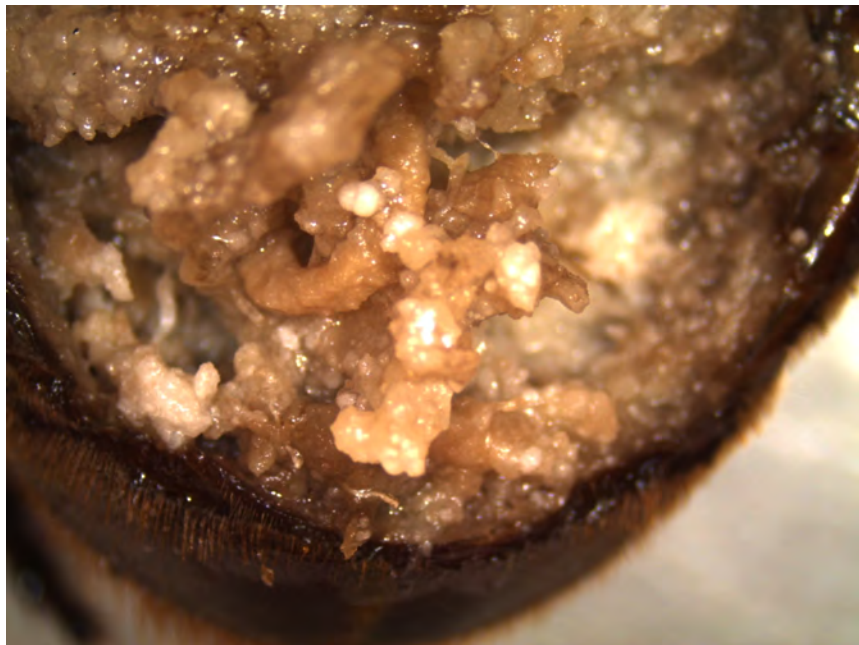


Figure 6: Beetle 200140114.04.